

An architectural rendering of the Johns Hill Magnet School. The building is a modern, two-story structure with a white facade and large glass windows. A red sign on the right side of the building reads "JOHNS HILL MAGNET". The building is surrounded by lush greenery, including trees and flowering plants. A playground with red and blue equipment is visible on the left. Several cars are parked in a lot to the right of the building. The sky is blue with scattered clouds.

Johns Hill Magnet School

Schematic Design

July 2019

Prepared by:

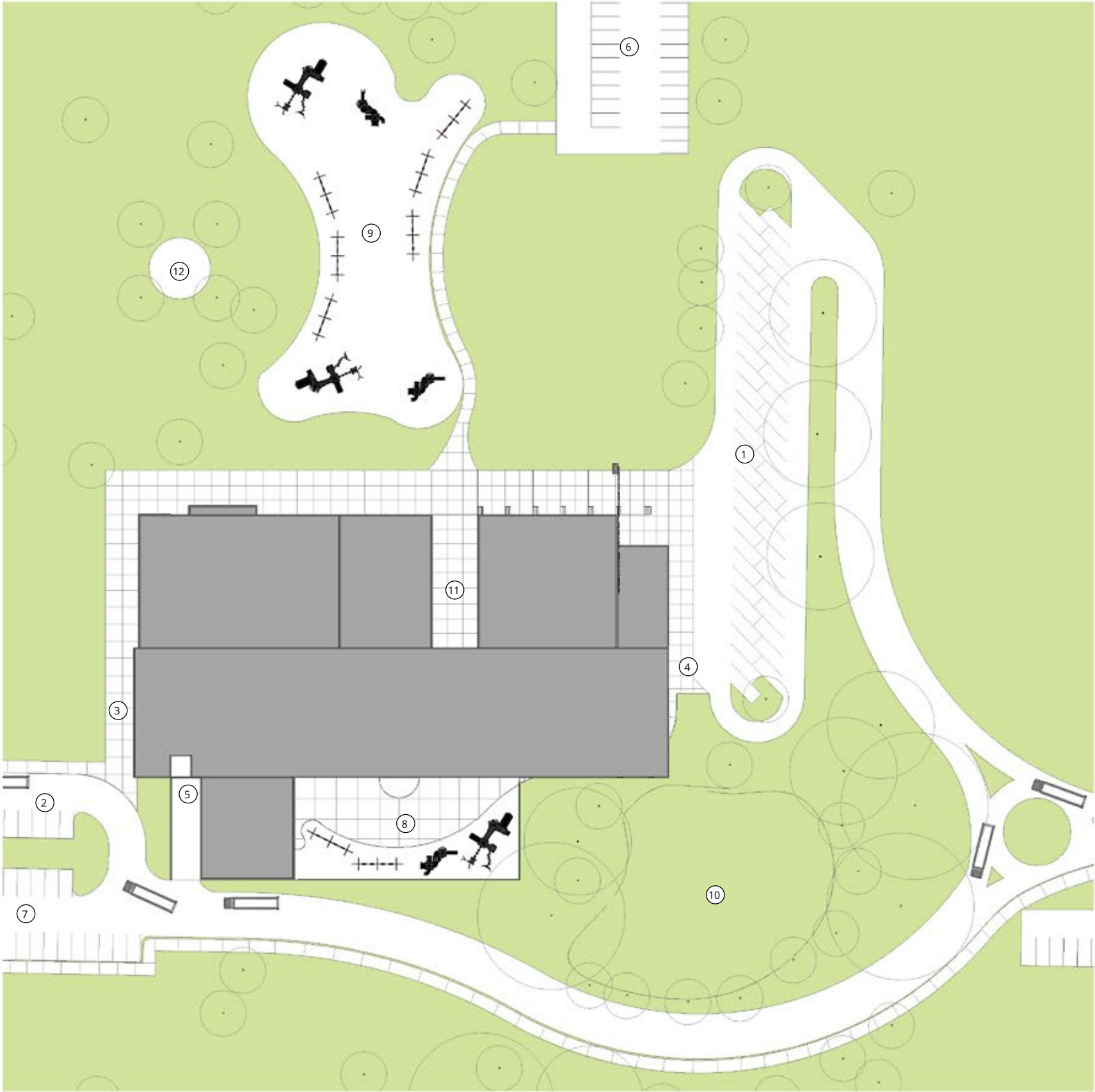
 **BLDD**
ARCHITECTS



- 1 PARENT DROP OFF/VISITOR PARKING
- 2 BUS DROP OFF
- 3 SECOND FLOOR AUDITORIUM ENTRY
- 4 FIRST FLOOR MAIN ENTRY
- 5 SERVICE DOCK
- 6 EXISTING PARKING LOT
- 7 STAFF PARKING
- 8 PRIMARY PLAYGROUND
- 9 INTERMEDIATE PLAYGROUND
- 10 RAIN GARDEN
- 11 SCULPTURE ALLEY
- 12 COUNCIL RING
- 13 SOCCER FIELD (PIGOTT FIELD)
- 14 FUTURE FOOTBALL FIELD

SCALE: 1" = 160'-0"

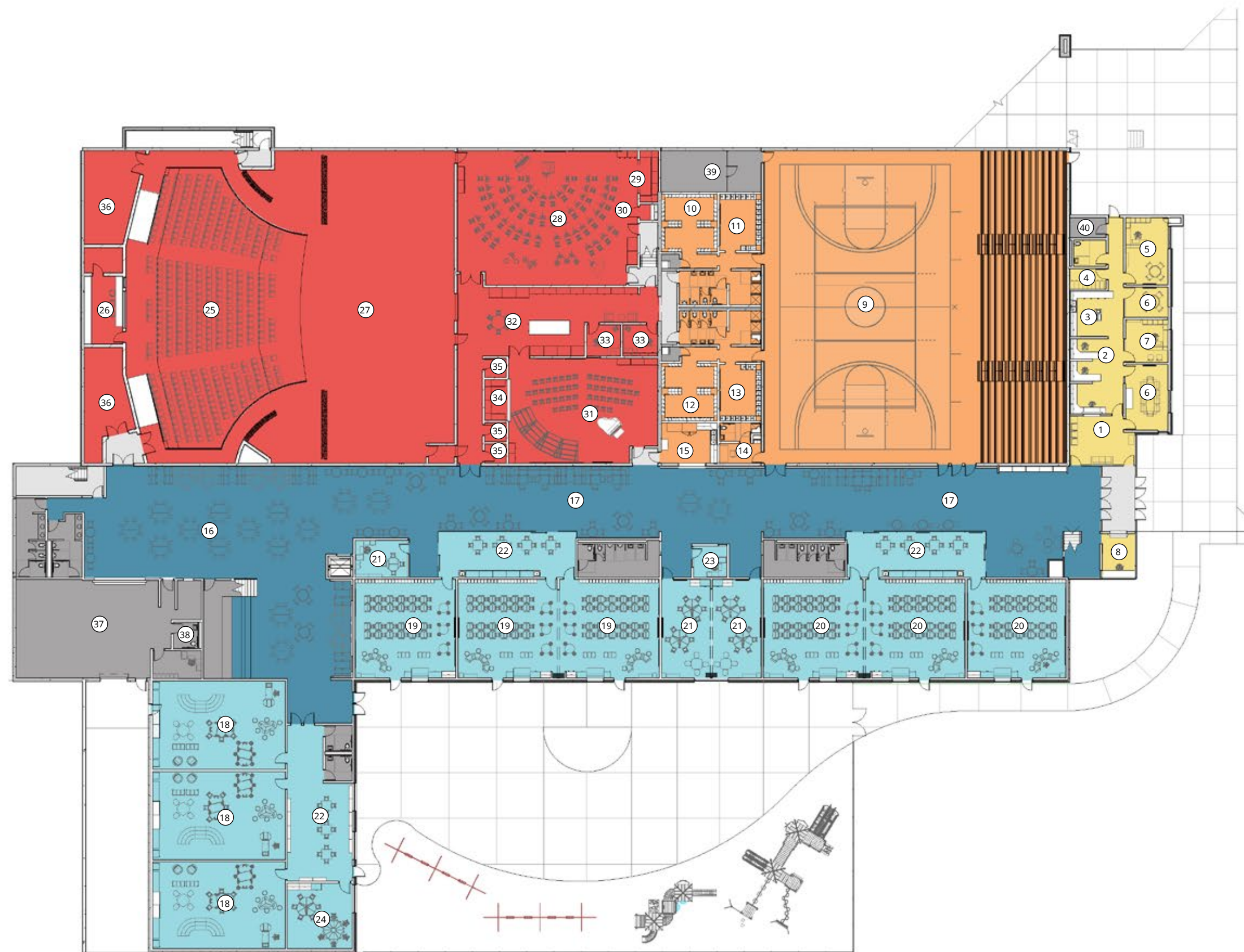




- 1 PARENT DROP OFF/VISITOR PARKING
- 2 BUS DROP OFF
- 3 SECOND FLOOR AUDITORIUM ENTRY
- 4 FIRST FLOOR MAIN ENTRY
- 5 SERVICE DOCK
- 6 EXISTING PARKING LOT
- 7 STAFF PARKING
- 8 PRIMARY PLAYGROUND
- 9 INTERMEDIATE PLAYGROUND
- 10 RAIN GARDEN
- 11 SCULPTURE ALLEY
- 12 COUNCIL RING
- 13 SOCCER FIELD (PIGOTT FIELD)
- 14 FUTURE FOOTBALL FIELD

SCALE: 1" = 80'-0"





ADMINISTRATION

- 1 RECEPTION
- 2 SECRETARY
- 3 WORKROOM
- 4 ARCHIVE STORAGE
- 5 PRINCIPAL
- 6 CONFERENCE ROOM
- 7 ASSISTANT PRINCIPAL
- 8 SECURITY

ASSEMBLY

- 9 GYM
- 10 BOYS PE LOCKER ROOM
- 11 BOYS ATHLETIC LOCKER RM
- 12 GIRLS PE LOCKER RM
- 13 GIRLS ATHLETIC LOCKER RM
- 14 REF / COACH
- 15 CONCESSION

COLLABORATION

- 16 DINING
- 17 COMMONS

CLASSROOM

- 18 KINDERGARTEN
- 19 FIRST GRADE
- 20 SECOND GRADE
- 21 ESL
- 22 ACTIVITY
- 23 SPEECH
- 24 CROSS CATEGORY

MEDIA/ARTS

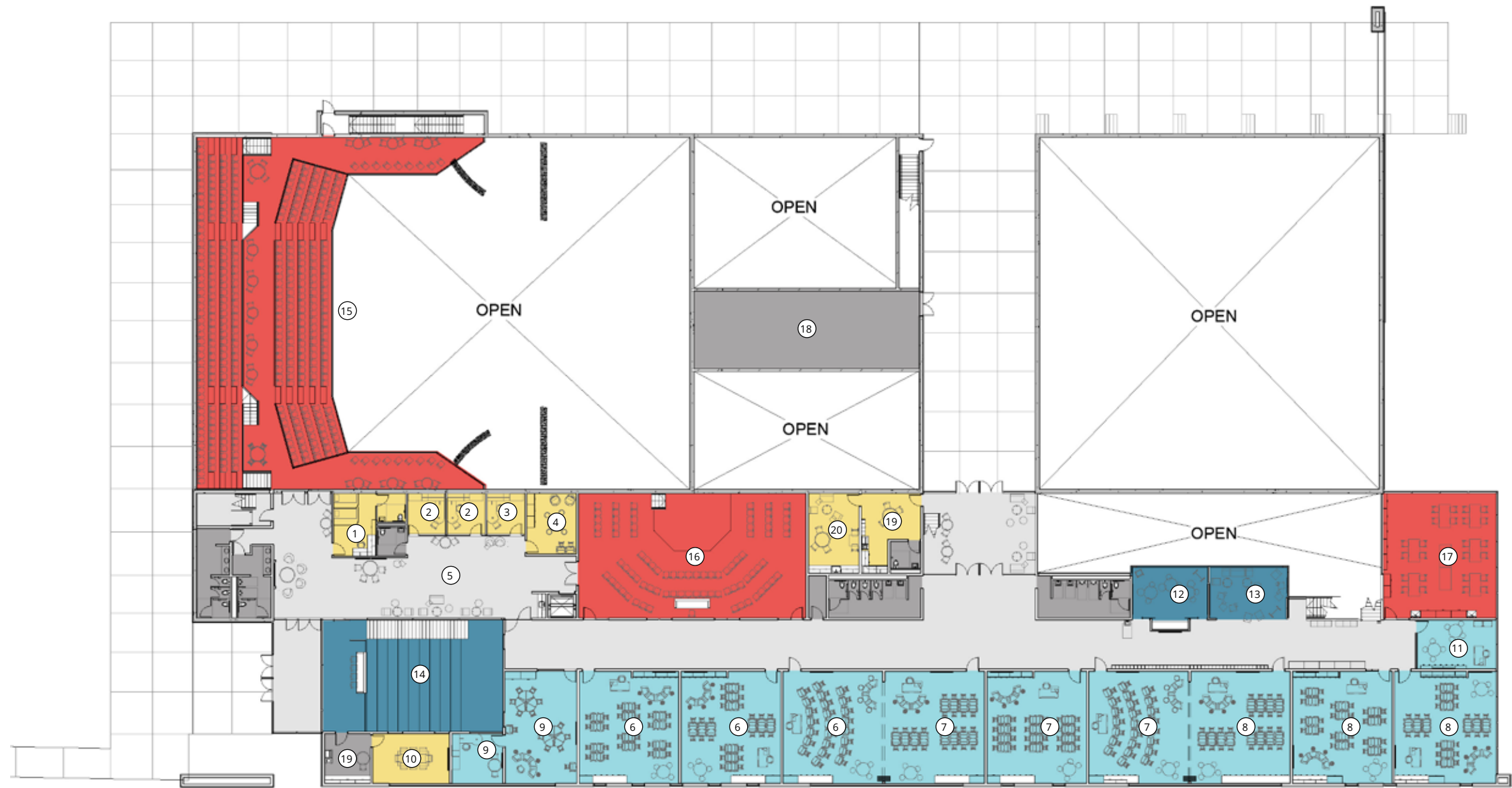
- 25 AUDITORIUM
- 26 A/V BOOTH
- 27 STAGE
- 28 BAND
- 29 UNIFORM STORAGE
- 30 REPAIR
- 31 CHORUS
- 32 MUSIC COMMONS
- 33 OFFICE
- 34 ROBE STORAGE
- 35 PRACTICE
- 36 STORAGE

STORAGE & SUPPORT

- 37 KITCHEN
- 38 OFFICE
- 39 PE / ATHLETIC STORAGE
- 40 ELECTRICAL CLOSET

SCALE: 1/32" = 1'-0"



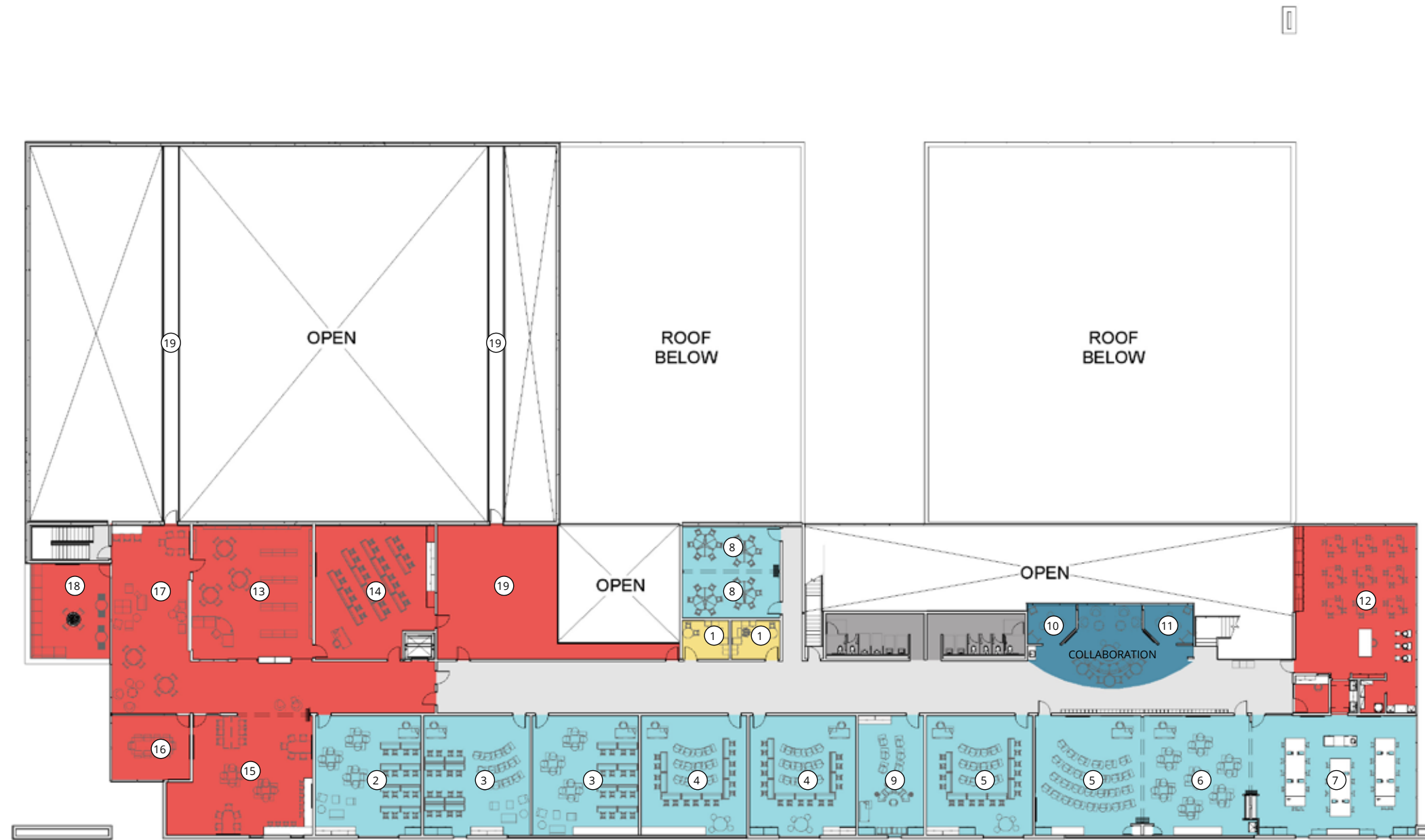


- ADMINISTRATION**
 - 1 NURSE
 - 2 SOCIAL WORKER
 - 3 COUNSELOR
 - 4 CARE CONFERENCE
- CIRCULATION**
 - 5 WELLNESS
- CLASSROOM**
 - 6 THIRD GRADE
 - 7 FOURTH GRADE
 - 8 FIFTH GRADE
 - 9 ESL
 - 10 IEP CONFERENCE
 - 11 CROSS CATEGORY
- COLLABORATION**
 - 12 CAVE
 - 13 CAMP
 - 14 LEARNING STAIR
- MEDIA/ARTS**
 - 15 AUDITORIUM BALCONY
 - 16 YOGA / DANCE / BLACK BOX
 - 17 ART
- STORAGE & SUPPORT**
 - 18 MECHANICAL
 - 19 TEACHER WORKROOM
 - 20 TEACHER OASIS

SCALE: 1/32" = 1'-0"



SECOND FLOOR PLAN



ADMINISTRATION

1 OFFICE

CLASSROOM

2 FOREIGN LANGUAGE
3 LANGUAGE
4 SOCIAL STUDIES
5 MATH
6 SCIENCE
7 LAB
8 ESL
9 CROSS CATEGORY

COLLABORATION

10 CAVE
11 CAMP

MEDIA/ARTS

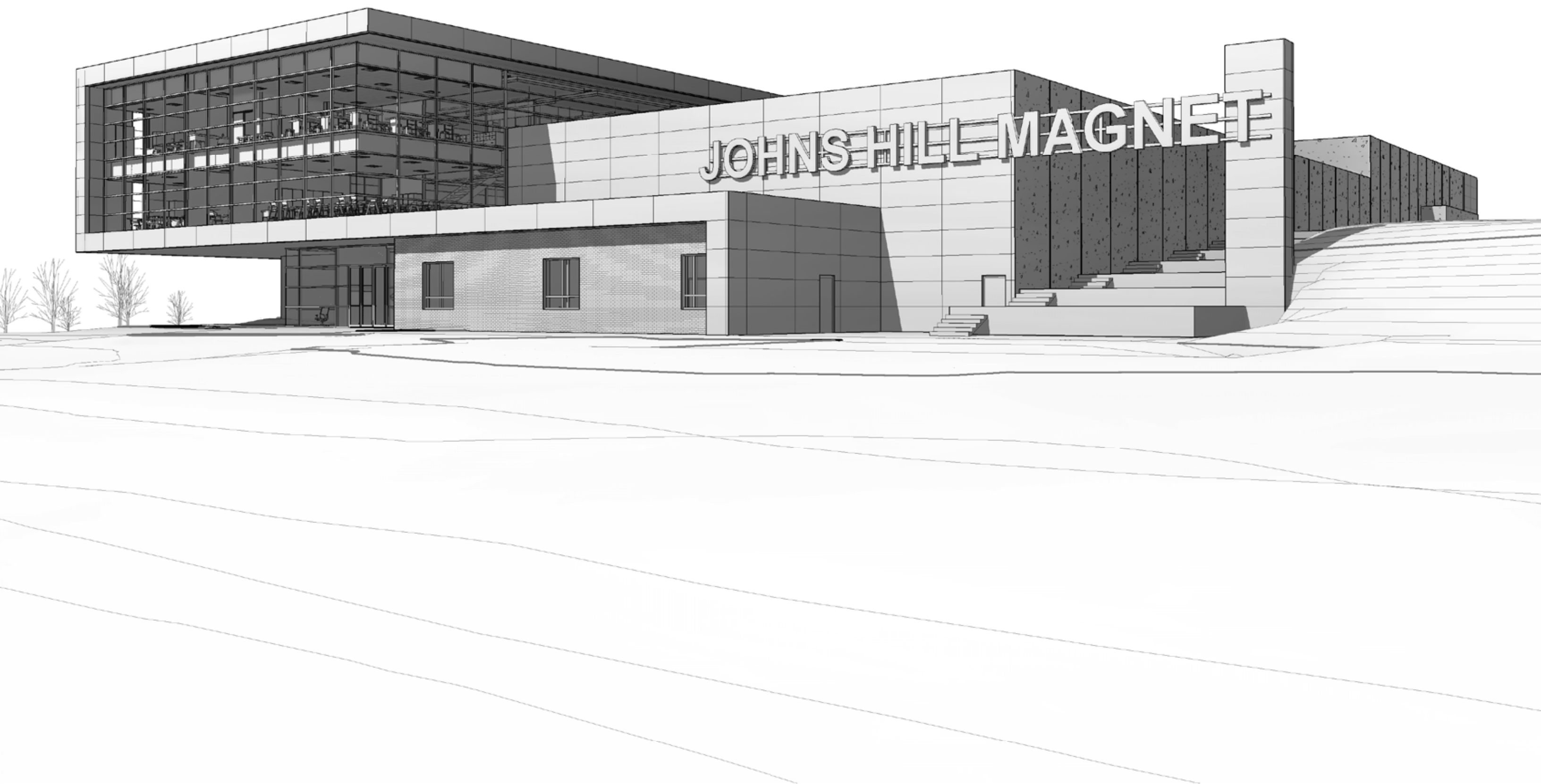
12 ART
13 LIBRARY
14 DRAMA
15 DIGITAL ART
16 CONFERENCE
17 COLLABORATION
18 BALCONY
19 CATWALK

SCALE: 1/32" = 1'-0"

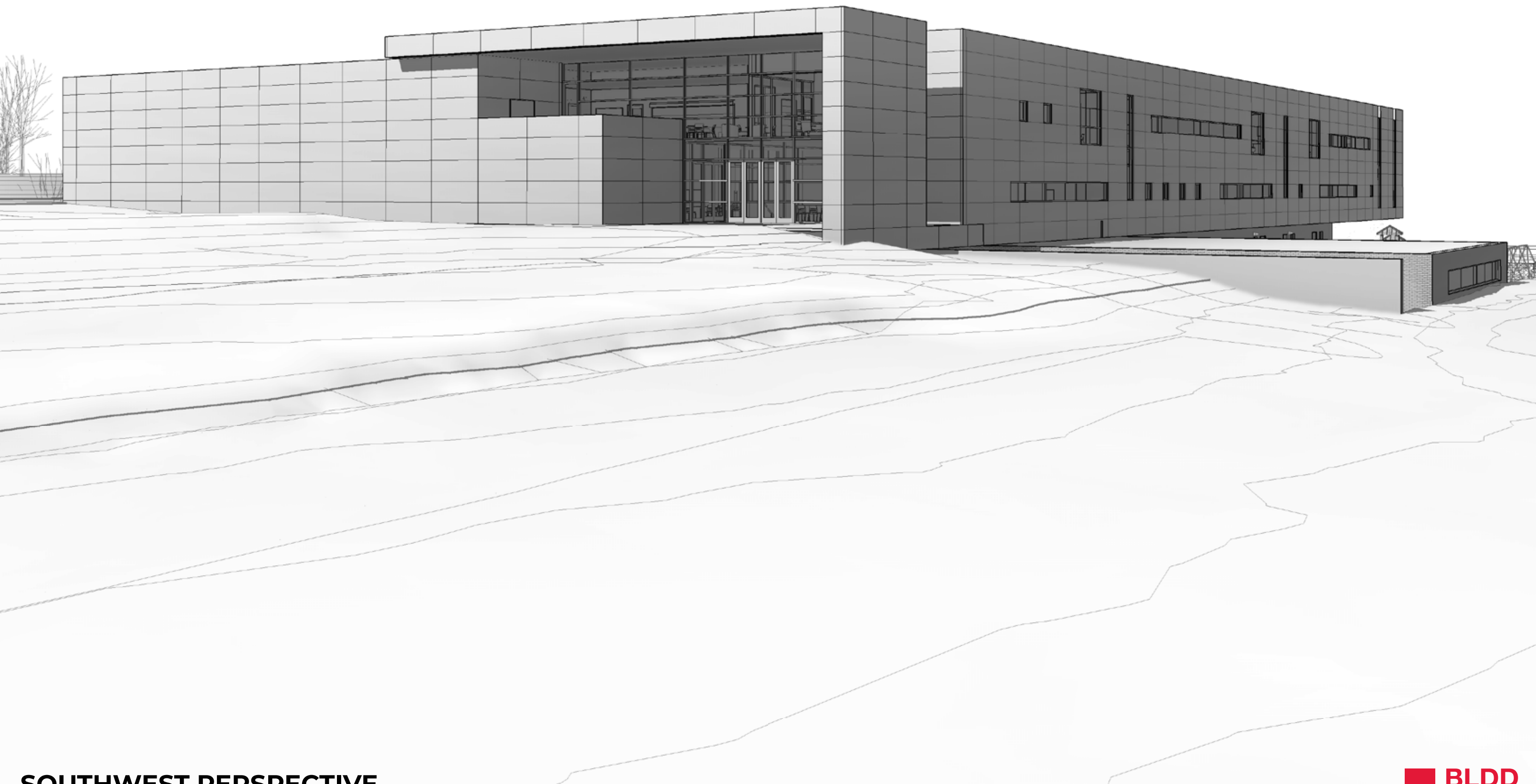




SOUTHEAST BIRDS EYE PERSPECTIVE

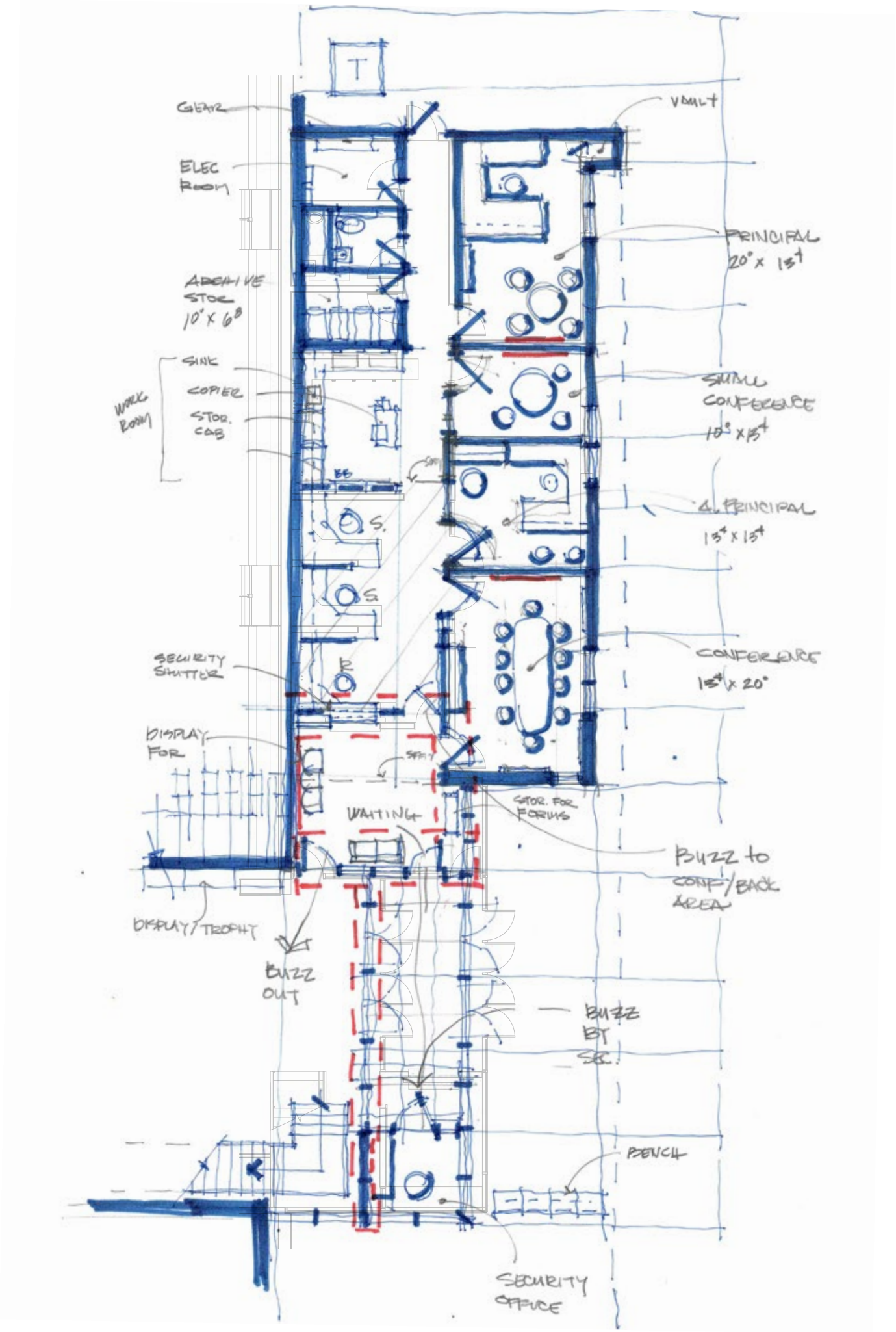


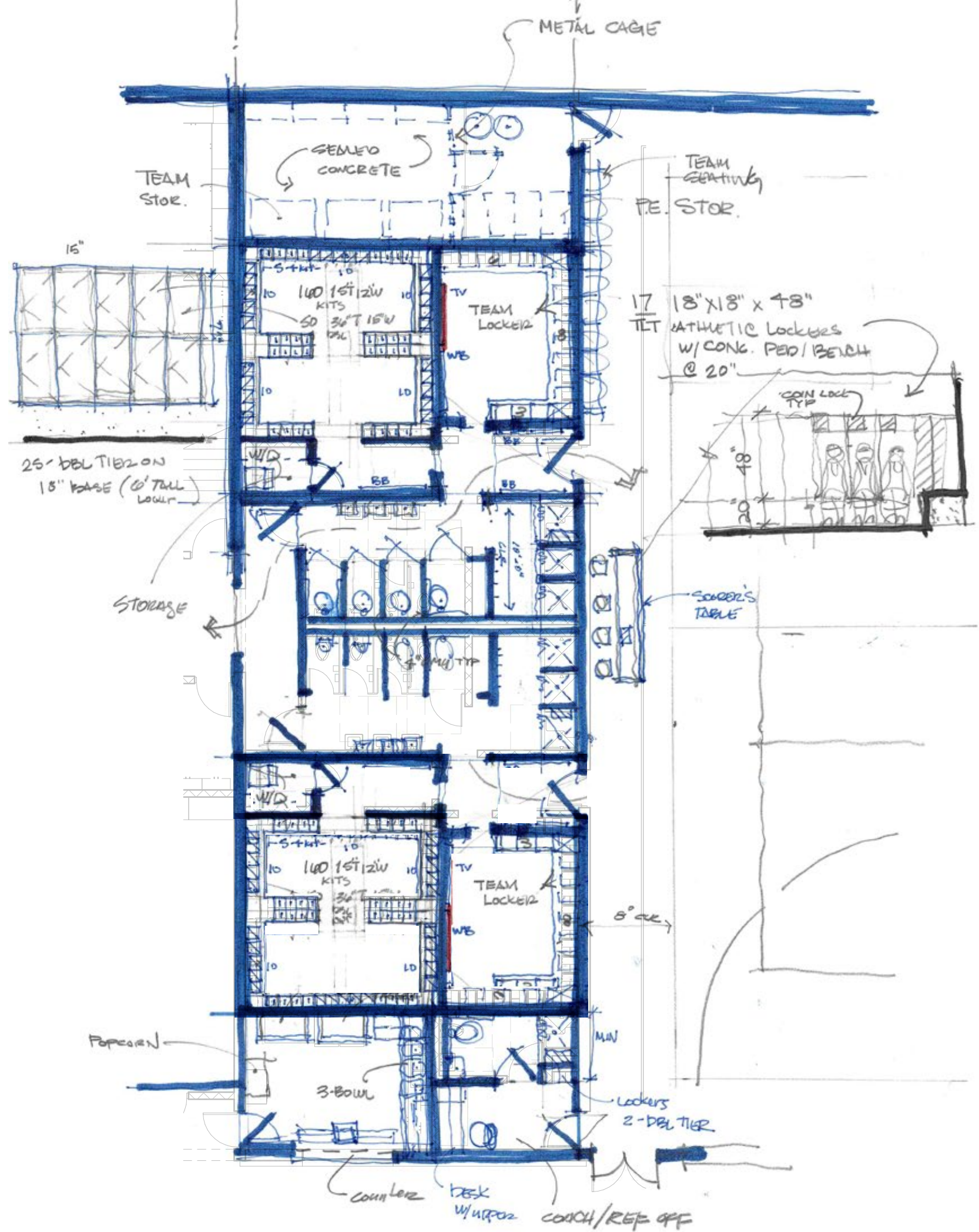
NORTHEAST PERSPECTIVE

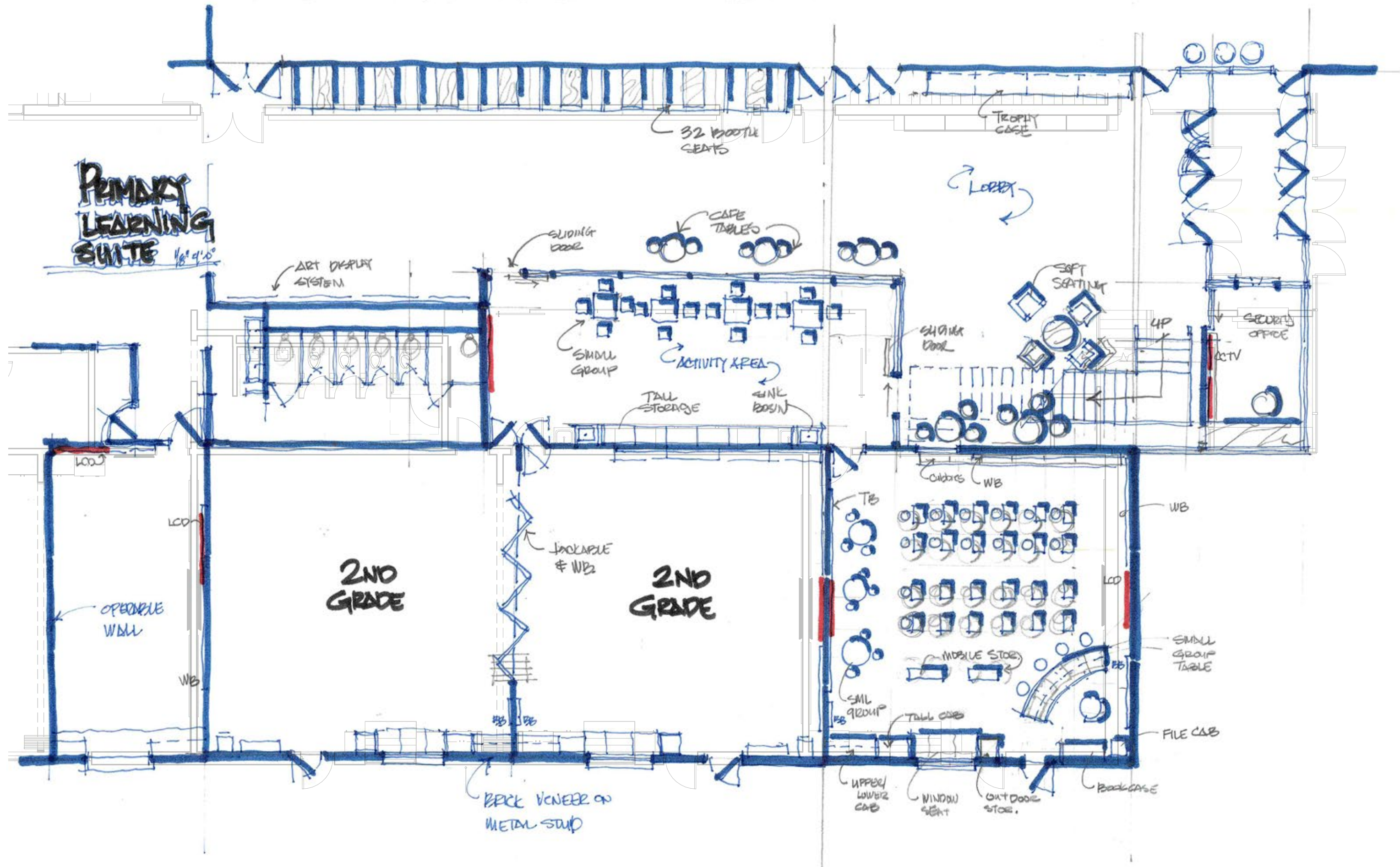


SOUTHWEST PERSPECTIVE

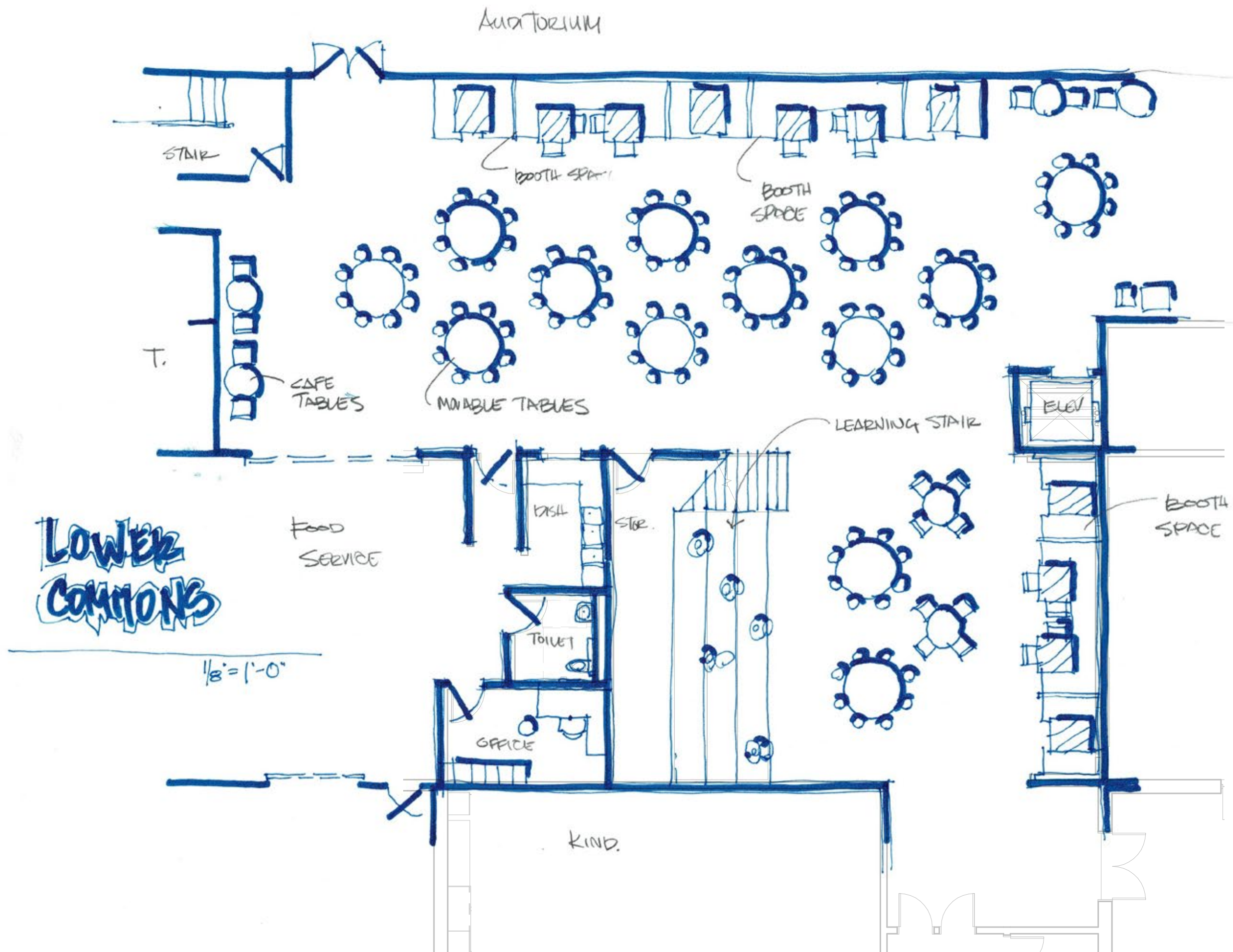




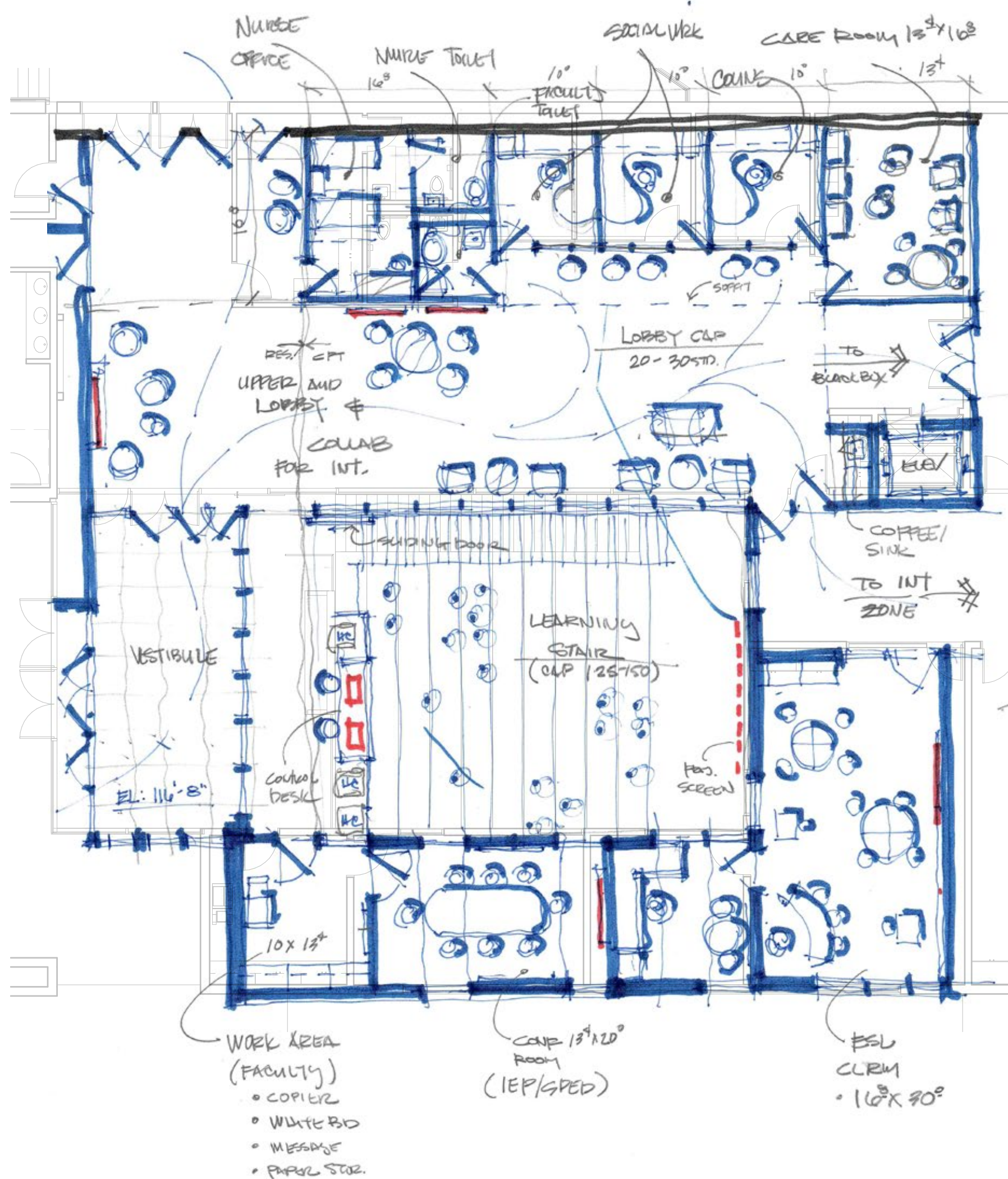




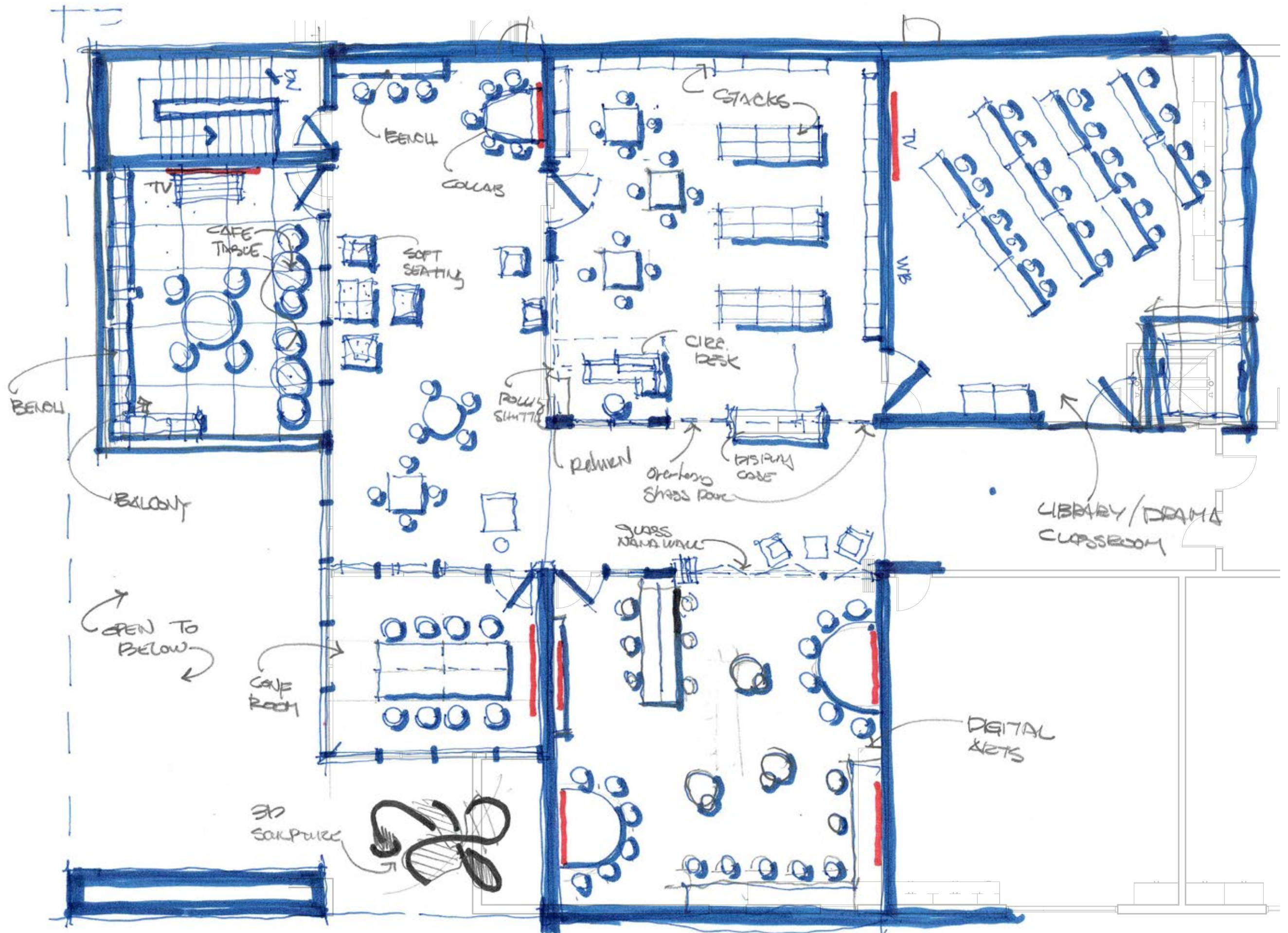
PRIMARY LEARNING SUITE



FIRST FLOOR LOWER COMMONS



UPPER LOBBY



STEAM CONCEPT

JULIA M. MAGNET SCHOOL 9/19

OPEN
TO
BELOW

STORAGE
SHULK OVER
COBINETS

STOR. CAB
W/ TACK
PIN DOOR

ART

DEMO
ZONE

MOVIE CAB
W/ WHITE BD

DRINK

OVERHEAD COLL. UNIT

INST. STATION

LAB

WORK BENCH
W/ STOR. / SINKS

MICROSTORAGE

CAB W/ SHELVES

CAB W/ SHELVES

30 TABLES

50X50 TABLES

WHEELS

PAPER
STORAGE/
WORK TABLE

WEDGE
TABLE

CLAY
BARREL

DEEP
BRAIN
SINK

TYP. SCI.
WORKSTATION
- 32" WIDE KNEE
SPACE
- SHARED SINK
DRAWER / CAB

BLDD ARCHITECTS

CORE DRIVE

LOUNGE
SEATS

COLD
FURN

10'

LCO

LCO

BENCH

COLD
FURN

5'-4"

10 STEPS @ 11" = 14'-8"

3'-4"

SMOKE
CHIMNEY?

12' x 12' STUDENT / FAC. STORAGE

TYP. CR.

MATH

SCIENCE

HOOD

STOR.

TALL CAB

EDGE CAB

SINK

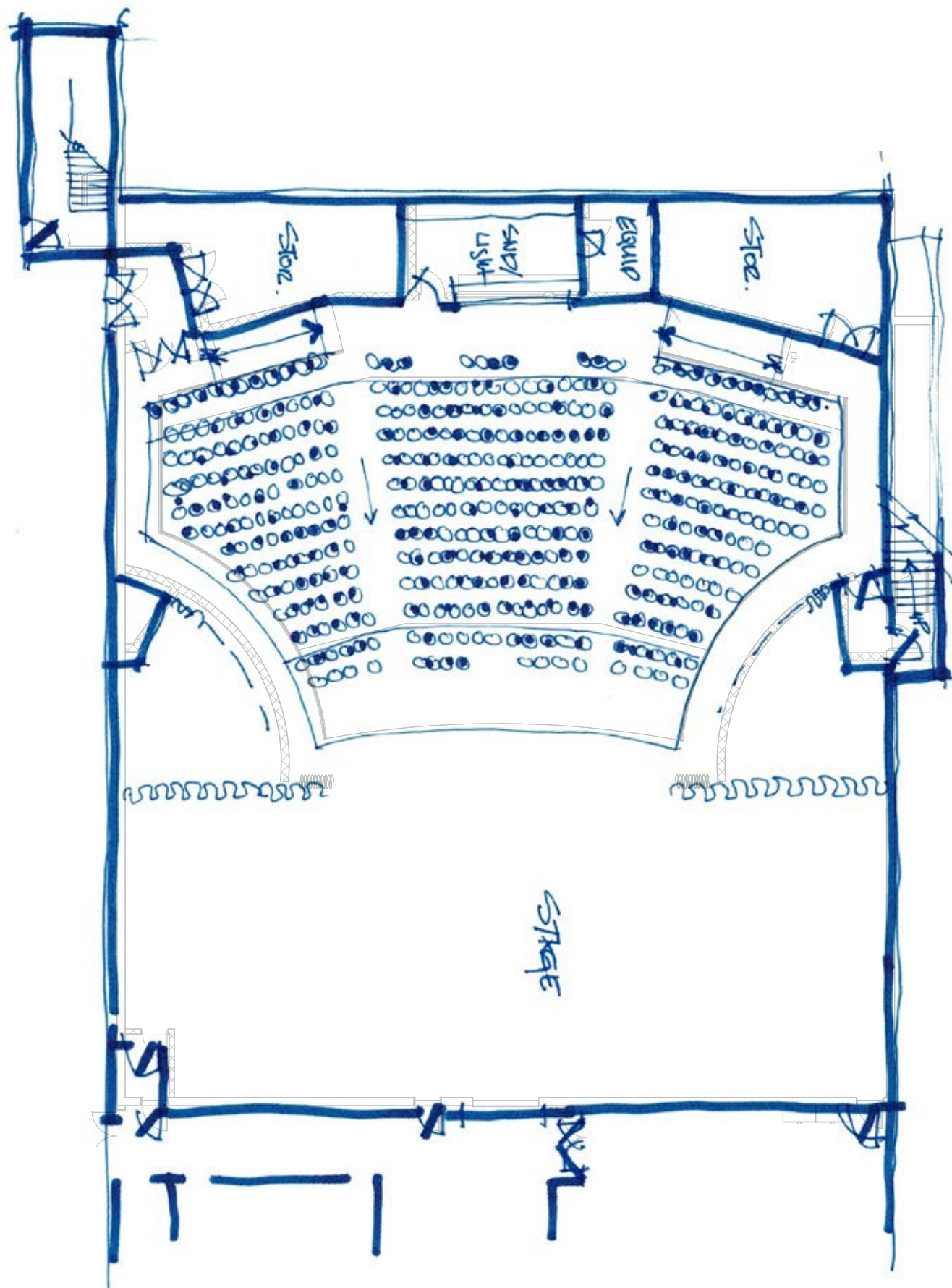
BATH

TALL CAB

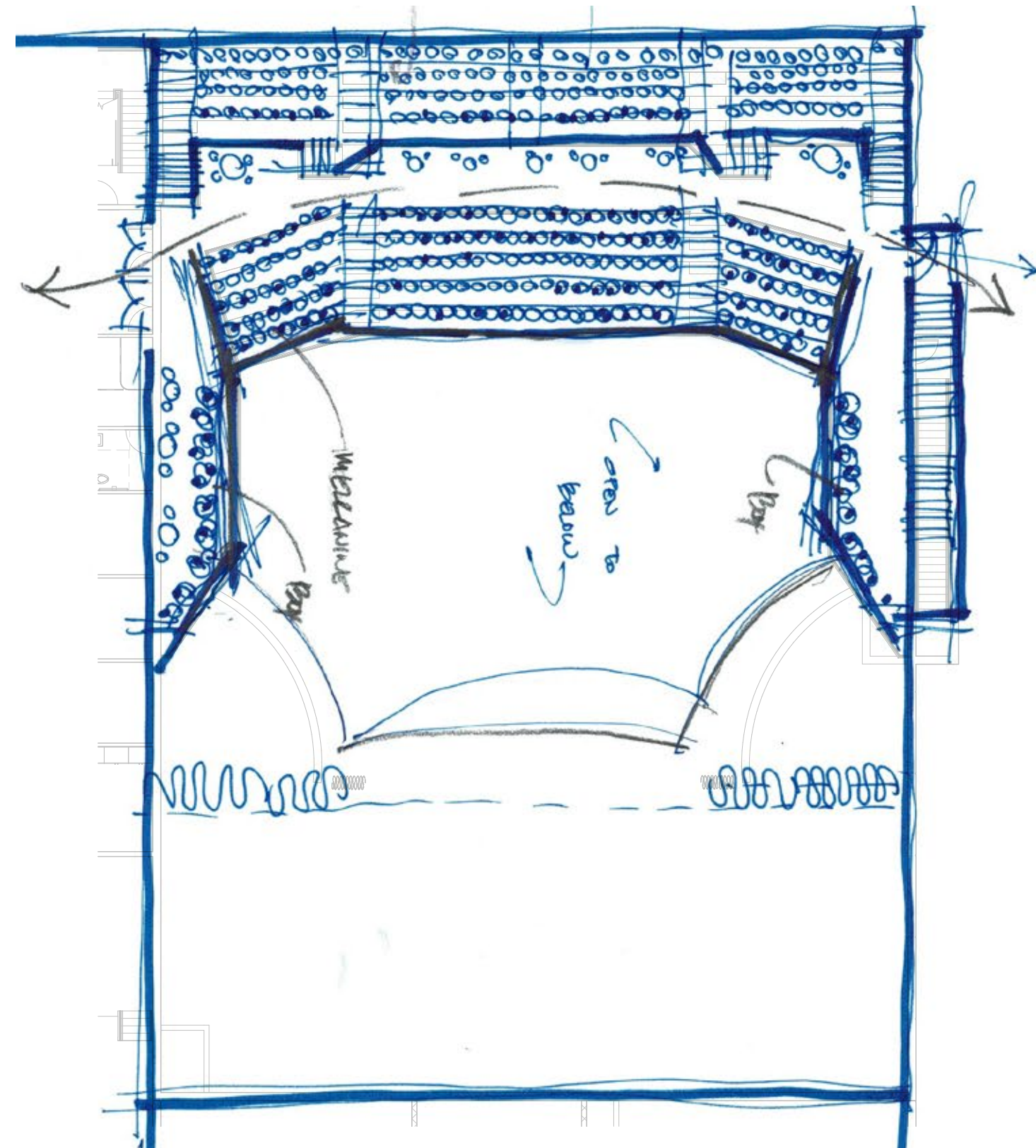
THIRD FLOOR

SCALE 1/8" = 1'-0"

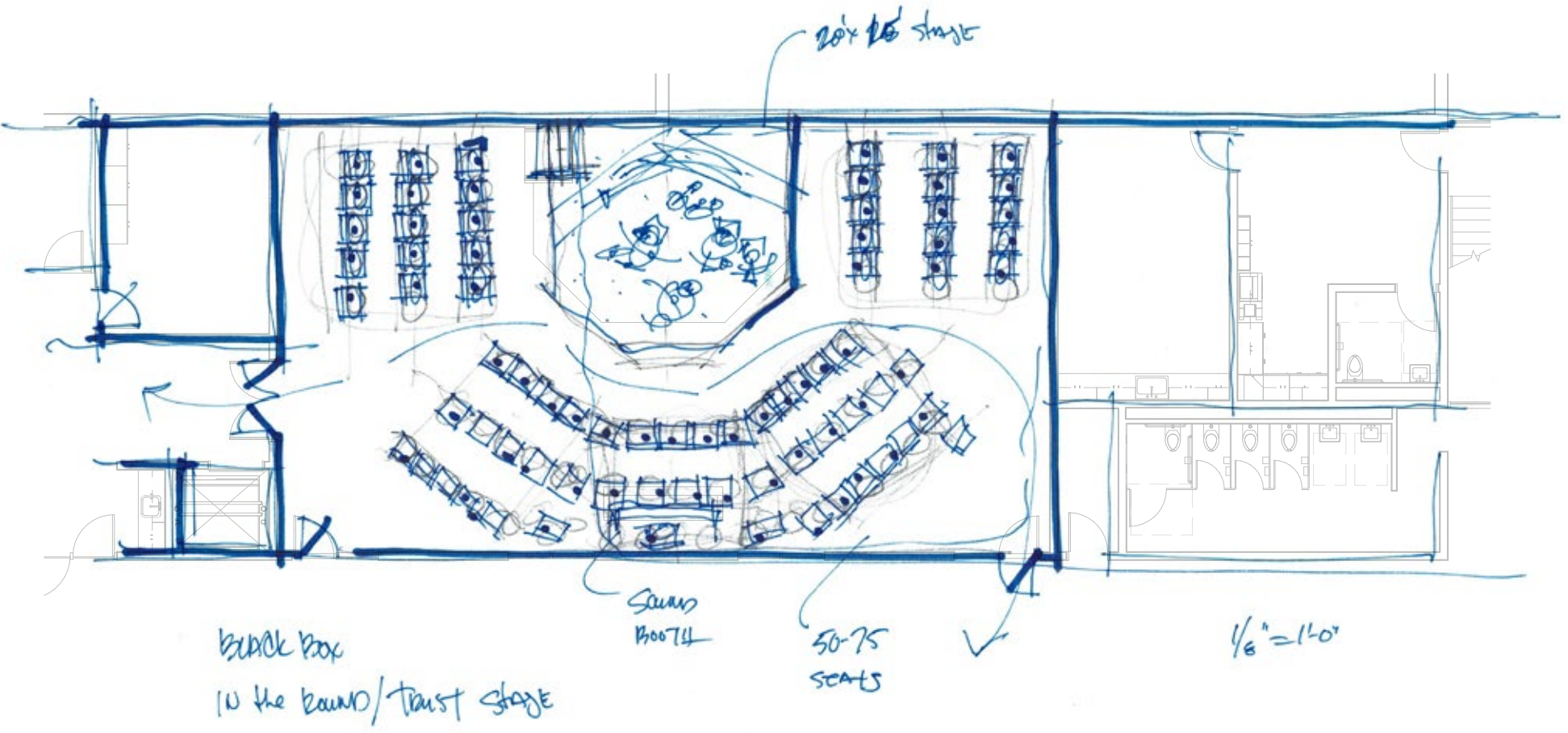




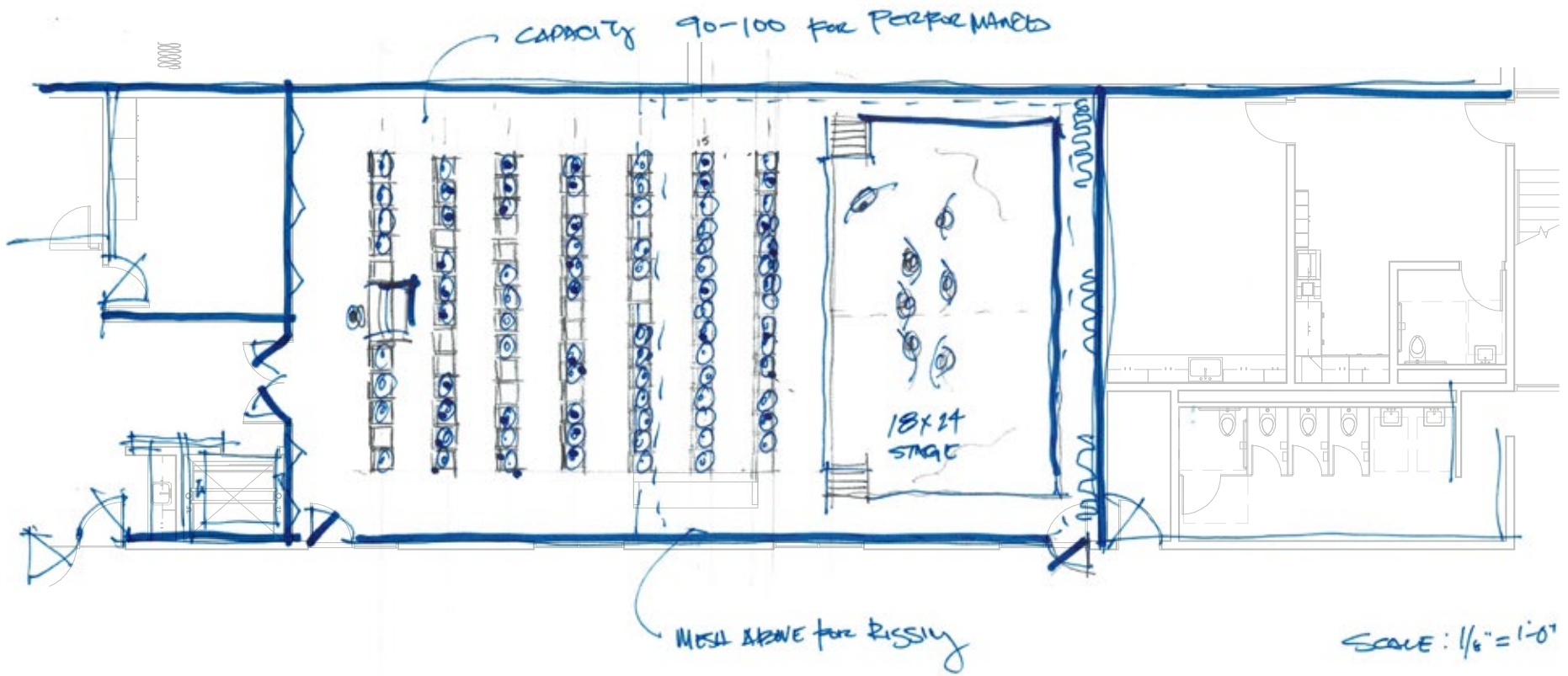
AUDITORIUM - LOWER LEVEL



AUDITORIUM - UPPER LEVEL



BLACK BOX



DANCE/YOGA

